

# FAU902

The FAU902 is an all-season tyre designed to deliver excellent drive and handling performance across a wide range of conditions. Its high sea-land ratio and wide tread design, combined with large zigzag grooves, provide strong stability and confident driving, whether on dry or wet roads.

Multiple grooves and a Z-shaped deep sipe design enhance wet grip, achieving a B-rating under R117 standards for wet performance. Built with a high-wear-volume, wear-resistant compound, the FAU902 offers impressive durability and long tread life. With reliable traction and added safety in snowy conditions, it is a versatile choice for year-round motoring.

## Performance Ratings:

Mileage Potential



All Season Traction



Damage Resistance



## Benefits:



### Good Durability

Crafted to withstand the rigours of challenging terrain.



### Reliable Traction

Ensures reliable traction on winding roads and in bustling city environments.



### Treadlife

Maximises cost-efficiency and operational uptime.



Excellent regroovability and retreadability.  
Economy meets ecology.



Available for Electric Buses







Designed for performance in severe snow and cold weather conditions.

### Bus/Urban Series

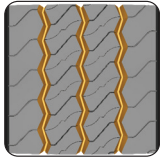


All Position



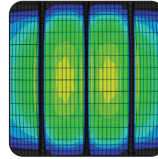
SIZE	PR	LI / SR	 1	 2	 3	
275/70R22.5	18PR	152/149J	C	B	71db A	✓

1 = Fuel Efficiency    2 = Wet grip scale    3 = External rolling noise



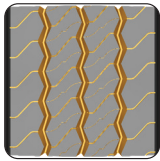
### Large zigzag grooves.

The zigzag main groove significantly improves the tire's traction and grip on wet surfaces.



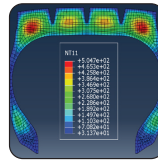
### Even contact pressure.

The distribution of contact pressure is even to avoid abnormal wear.



### Z-shaped alternating deep sipes

Provide tyres with excellent grip and driving performance.



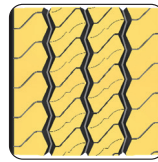
### Retreaded.

The new tire profile and body ply steel cord improve tire durability and allow for retreading.



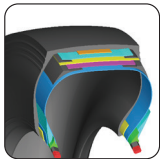
### Super strong tire bead.

The high-strength chipper, combined with a larger bead design, enhances the tire bead's endurance performance.



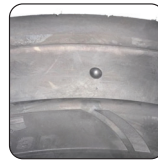
### High NG and wide tread width.

Increase effective wear volume to ensure excellent mileage.



### New, special compound.

Special compound for electric bus tires features high grip, excellent wear resistance, low heat generation, and reduced rolling resistance, ensuring strong driving performance.



### Sidewall Protector.

Thicker gauge on the upper sidewall to improve protection against scratches and abrasions.

